

RIVER BRIDGE P.U.D. PLAT 3C

A REPLAT OF PARCEL 3C
 RIVER BRIDGE P.U.D. PLAT 3A (PLAT BOOK 69, PAGES 157 THROUGH 158)
 OF THE PUBLIC RECORDS OF PALM BEACH COUNTY, FLORIDA
 A PORTION OF SECTION 15, TOWNSHIP 44 SOUTH, RANGE 42 EAST,
 CITY OF GREENACRES, PALM BEACH COUNTY, FLORIDA.

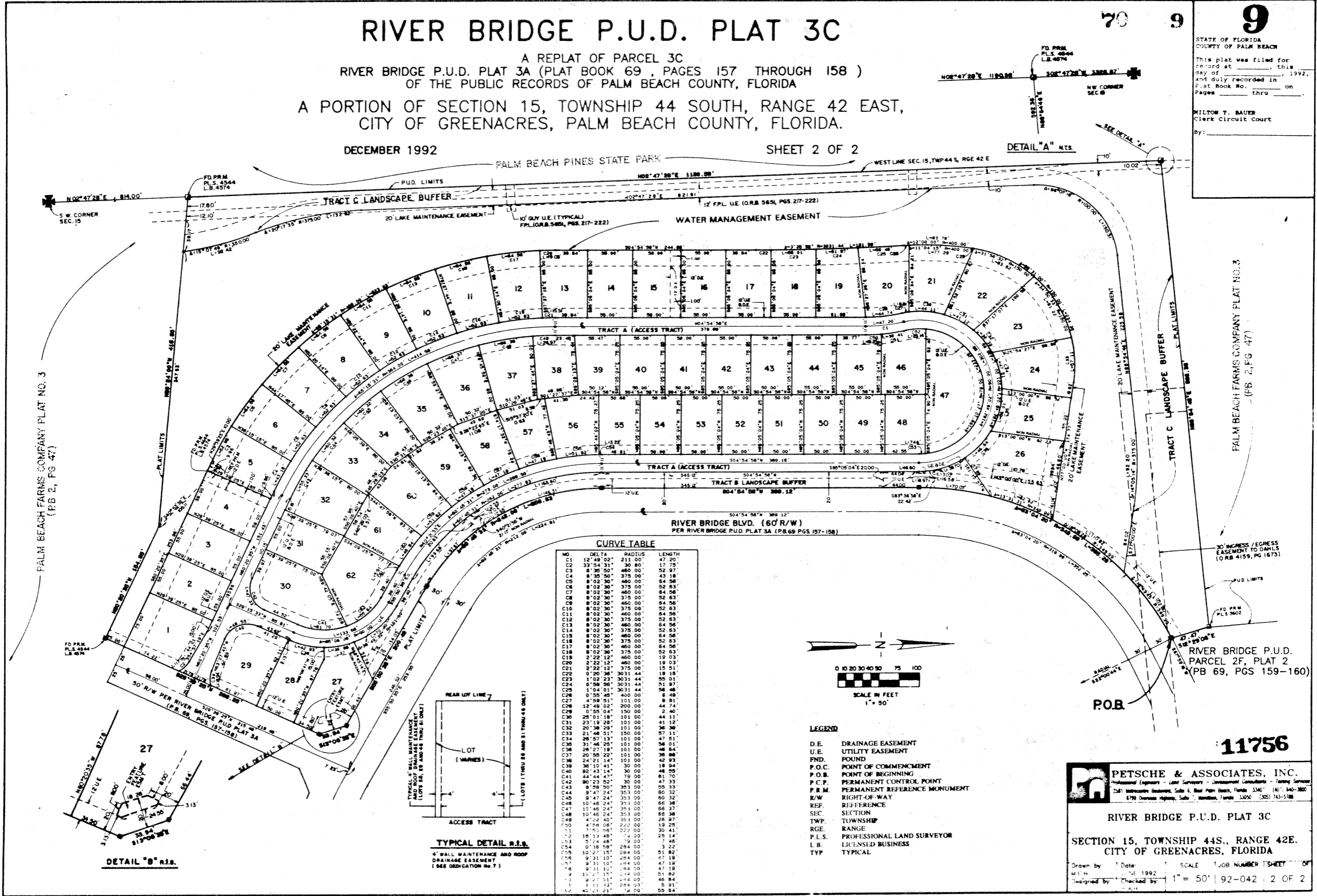
DECEMBER 1992

SHEET 2 OF 2

70 9

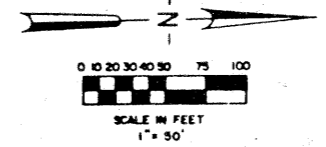
9

STATE OF FLORIDA
 COUNTY OF PALM BEACH
 This plat was filed for
 record at _____ this
 day of _____, 1992,
 and duly recorded in
 Plat Book No. _____ on
 Pages _____ thru _____
 MILTON T. BAUER
 Clerk Circuit Court
 By: _____

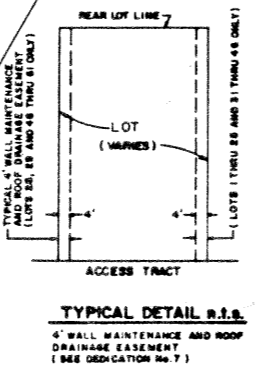
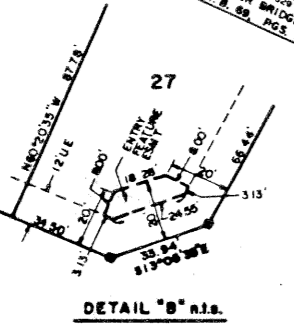


CURVE TABLE

NO.	DELTA	RADIUS	LENGTH
C01	12° 49' 02"	215.00	47.20
C02	33° 54' 31"	30.80	17.78
C03	8° 35' 50"	480.00	52.97
C04	8° 35' 50"	375.00	43.18
C05	8° 02' 30"	460.00	64.56
C06	8° 02' 30"	375.00	52.63
C07	8° 02' 30"	460.00	64.56
C08	8° 02' 30"	375.00	52.63
C09	8° 02' 30"	460.00	64.56
C10	8° 02' 30"	375.00	52.63
C11	8° 02' 30"	460.00	64.56
C12	8° 02' 30"	375.00	52.63
C13	8° 02' 30"	460.00	64.56
C14	8° 02' 30"	375.00	52.63
C15	8° 02' 30"	460.00	64.56
C16	8° 02' 30"	375.00	52.63
C17	8° 02' 30"	460.00	64.56
C18	8° 02' 30"	375.00	52.63
C19	2° 22' 12"	460.00	19.03
C20	2° 22' 12"	375.00	15.51
C21	0° 20' 36"	3031.44	18.18
C22	1° 02' 23"	3031.44	55.01
C23	0° 58' 36"	3031.44	51.97
C24	1° 04' 01"	3031.44	56.48
C25	0° 55' 45"	400.00	8.49
C26	1° 49' 51"	101.00	8.91
C27	12° 49' 02"	200.00	44.74
C28	0° 55' 04"	150.00	2.40
C29	25° 01' 38"	101.00	44.12
C30	23° 19' 28"	101.00	41.12
C31	20° 38' 29"	101.00	36.30
C32	21° 48' 51"	150.00	57.11
C33	28° 57' 13"	101.00	47.51
C34	31° 46' 25"	101.00	56.01
C35	28° 57' 19"	101.00	46.84
C36	20° 55' 22"	101.00	36.88
C37	24° 21' 14"	101.00	42.83
C38	18° 10' 41"	30.00	18.34
C39	92° 43' 14"	30.00	46.55
C40	92° 43' 14"	30.00	46.55
C41	44° 44' 47"	79.00	61.70
C42	80° 23' 52"	30.00	47.33
C43	8° 58' 50"	353.00	55.33
C44	9° 47' 24"	353.00	66.37
C45	9° 47' 24"	353.00	66.37
C46	10° 46' 24"	353.00	66.38
C47	10° 46' 24"	353.00	66.38
C48	10° 46' 24"	353.00	66.38
C49	10° 46' 24"	353.00	66.38
C50	10° 46' 24"	353.00	66.38
C51	10° 46' 24"	353.00	66.38
C52	10° 46' 24"	353.00	66.38
C53	10° 46' 24"	353.00	66.38
C54	10° 46' 24"	353.00	66.38
C55	10° 46' 24"	353.00	66.38
C56	10° 46' 24"	353.00	66.38
C57	10° 46' 24"	353.00	66.38
C58	10° 46' 24"	353.00	66.38
C59	10° 46' 24"	353.00	66.38
C60	10° 46' 24"	353.00	66.38
C61	10° 46' 24"	353.00	66.38
C62	10° 46' 24"	353.00	66.38



- LEGEND**
- D.E. DRAINAGE EASEMENT
 - U.E. UTILITY EASEMENT
 - FND. FOUND
 - P.O.C. POINT OF COMMENCEMENT
 - P.O.B. POINT OF BEGINNING
 - P.C.P. PERMANENT CONTROL POINT
 - P.R.M. PERMANENT REFERENCE MONUMENT
 - R/W. RIGHT-OF-WAY
 - REF. REFERENCE
 - SEC. SECTION
 - TWP. TOWNSHIP
 - RGE. RANGE
 - P.L.S. PROFESSIONAL LAND SURVEYOR
 - L.B. LICENSED BUSINESS
 - TYP. TYPICAL



11756

PETSCHÉ & ASSOCIATES, INC.
 Professional Engineers - Land Surveyors - Development Consultants - Survey Services
 2281 International Boulevard, Suite 6, West Palm Beach, Florida 33407 (407) 640-3800
 6799 Overseas Highway, Suite 7, Homestead, Florida 33050 (305) 743-5188

RIVER BRIDGE P.U.D. PLAT 3C
 SECTION 15, TOWNSHIP 44S., RANGE 42E.
 CITY OF GREENACRES, FLORIDA

Drawn by _____ Date _____ SCALE 1"=50' JOB NUMBER _____ SHEET 02 OF 02
 M.T.B. DATE 1992
 Designed by _____ Checked by _____